



RH LIGHTING SOLUTIONS
 3155 WEST 33RD STREET
 CLEVELAND, OH 44109
 PHONE: 877-905-4448
 FAX: 877-428-3080
 WWW.RHLIGHTINGSOLUTIONS.COM

SF SERIES DELUXE FLOODLIGHTS

50 - 1000 WATTS
 PSMH | MH | HPS



JOB NAME: _____
 TYPE: _____ QUANTITY: _____
 CATALOG No: _____
 NOTES: _____



APPLICATION: THE SF SERIES IS AN EFFICIENT DELUXE FLOODLIGHT WITH WIDE VERTICAL AND HORIZONTAL LIGHT DISTRIBUTION. FULLY SEALED AND GASKETED FOR BOTH UPWARD AND DOWNWARD AIMING. IT IS DESIGNED FOR GENERAL PURPOSE EXTERIOR FLOODLIGHTING APPLICATIONS SUCH AS: PERIMETER AREAS, RECREATIONAL SPORTS FACILITIES, BUILDING FACADES AND GENERAL SAFETY AND SECURITY LIGHTING.

LAMPS: SFS (12") ACCOMODATES 50W TO 150W HPS AND 50W TO 175W PULSE START MH AND STANDARD MH LAMPS. SFM (16") ACCOMODATES 150W TO 400W HPS, PULSE START MH AND STANDARD MH LAMPS. SFL (24") ACCOMODATES UP TO 1000W HPS AND STANDARD MH LAMPS.

BALLAST: HPF REACTOR, HIGH POWER FACTOR HX TYPE OR CWA CORE AND COIL WITH A MINIMUM STARTING TEMPERATURE OF -20°F.

SOCKET: UNITS FEATURE A MOGUL E39 BASE HEAVY-DUTY GLAZED PORCELAIN LAMPHOLDER, PRE-WIRED, WITH AN ENCLOSED SCREW SHELL AND SPRING-LOADED CENTER CONTACT, 5KV PULSE RATED.

HOUSING: HIGH-STRENGTH, DIE-CAST ALUMINUM BODY WITH DIE-CAST HINGED FACE FRAME. MOUNTING TRUNNION IS FORMED HEAVY GAUGE STEEL. OPTIOANL SLIPFITTER IS OF DIE-CAST ALUMINUM.

FINISH: THE HOUSING IS FINISHED ARCHITECTURAL DARK BRONZE IN A SUPERIOR, BAKED-ON, CORROSION RESISTANT POWDER COATING, ALLOWING THE FIXTURE TO WITHSTAND EXTREME WEATHER CHANGES WITHOUT CRACKING OR PEELING.

LENS: CLEAR, FLAT HEAT-RESISTANT GLASS SEALED INTO A HINGED DIE-CAST ALUMINUM DOOR FRAME.

REFLECTOR: REFLECTORS FORMED FROM ONE PIECE BRIGHTENED, ANODIZED ALUMINUM PROVIDING AND WIDE THROW NEMA 7 X 7 LIGHT DISTRIBUTION PATTERN.

MOUNTING: UNITS ARE PROVIDED WITH EITHER AN ADJUSTABLE STEEL TRUNNION OR ADJUSTABLE SLIPFITTER. OPTIONAL POST TOP ADAPTER, AND ADJUSTABLE WALL MOUNT BRACKETS ARE AVAILABLE.

LISTING: CSA-US AND ETL LISTED FOR WET LOCATIONS AND GROUND MOUNTING AND UPWARD AIMING.



FIXTURE No.	WATTAGE	MOUNTING OPTION	ACCESSORIES (3)	VOLTAGE		
SFS (12" SIZE)	50HS	50W HIGH PRESSURE SODIUM	GSSFS, GSSFM, GSSFL 12" 16" OR 24" GLARE SHIELD, ALUMINUM WITH BRONZE FINISH (CAN BE REVERSE MOUNTED AS A BACK CUTOFF.) WGSFS, WGSFM, WGSFL 12" 16" OR 24" WIRE GUARD, STEEL PSSFS, PSSFM, PSSFL 12" 16" OR 24" CLEAR POLYCARBONATE VANDAL RESISTANT GUARD. BFSFS, BFSFM, BFSFL 12" 16" OR 24" ALUMINUM BAFFLE ASSEMBLY WITH BLACK POWDER COAT FINISH. FLPTM TENON MOUNT ADAPTER, SLIPS UP TO 2-3/8" O.D. (REQUIRES TRUNNION MOUNT) FLSWB SWIVEL WALL BRACKET (REQUIRES TRUNNION MOUNT)	120	120 VOLT (1)	
	70HS	70W HIGH PRESSURE SODIUM		208	208 VOLT (1)	
	100HS	100W HIGH PRESSURE SODIUM		240	240 VOLT (1)	
	150HS	150W HIGH PRESSURE SODIUM		277	277 VOLT (1)	
	50PSMH	50W PULSE START METAL HALIDE		347	347 VOLT (1,2)	
	70PSMH	70W PULSE START METAL HALIDE		480	480 VOLT (1)	
	100PSMH	100W PULSE START METAL HALIDE		MT	120/208/240/277	VOLT MULTI TAP
	150PSMH	150W PULSE START METAL HALIDE			480	480 VOLT
SFM (16" SIZE)	250MH	250W METAL HALIDE	CMT	120/277/347	VOLT(2) CANADIAN MULTI TAP	
	400MH	400W METAL HALIDE				
SFL (24" SIZE)	250HS	250W HIGH PRESSURE SODIUM				
	400HS	400W HIGH PRESSURE SODIUM				
SFL (24" SIZE)	1000MH	1000W METAL HALIDE				
	1000HS	1000W HIGH PRESSURE SODIUM				

ORDER EXAMPLE - SELECT ITEMS FROM ABOVE COLUMNS TO BUILD CATALOG NUMBER

↓	↓	↓	↓	↓
SFM	400PSMH	TM	PSSFM - FLSWB	240

NOTES: (1) FACTORY MAY USE MULTI TAP BALLAST WIRED TO SPECIFIED VOLTAGE.
 (2) CANADIAN VOLTAGE.
 (3) BRONZE FINISH IS STANDARD.



MADE IN USA ♦ © 2010 RH Lighting Solutions ♦ 3155 West 33rd Street, Cleveland, OH 44109
 www.rhlightingsolutions.com ♦ Phone: 877-905-4448 (877-90-LIGHT) ♦ Fax: 877-428-3080

SF SERIES - DIMENSIONS, ACCESSORIES AND TECHNICAL DATA

SFS

13.00, 20.25, 5.50, 5.35, 10.44, 12.48

SFM

16.47, 7.50, 9.91, 5.50, 5.35, 16.44

SFL

23.69, 16.61, 5.50, 22.44, 23.69, 5.35, 24.25, 23.69, 6.89, 5.50, 2.55

MOUNTING DETAIL - TRUNNION

4.50, .37, 1.24, .98, 1.24

MOUNTING DETAIL - SLIPFITTER

FITS 2-3/8 TENON

**SF
SLIPFITTER**

**PMA
ADJUSTABLE DIRECT
POLE MOUNT ARM**

**PSSFS, PSSFM,
PSSFL - GLARE
SHIELD (3 SIZES)**

**FLSWB - SWIVEL
WALL BRACKET
(REQUIRES TRUNNION)**

**FLPTM - POLE
TENON MOUNT
(REQUIRES TRUNNION)**

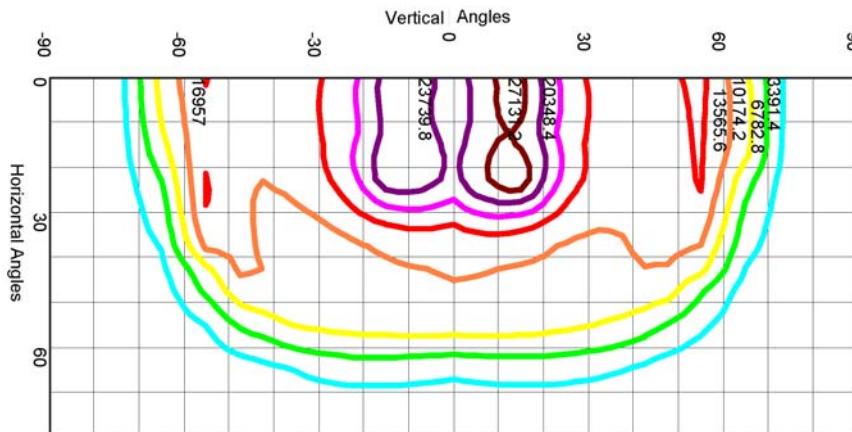
**GSSFS, GSSFM,
GSSFL - GLARE
SHIELD (3 SIZES)**

**WGSFS, WGSFM
WGSFL - WIRE
GUARD (3 SIZES)**

**BFSFM, BFSFL
BAFFLE (MEDIUM
AND LARGE ONLY)**

PHOTOMETRIC DATA - ISOCANDELA CURVES

SFL-1000MH - 110000 LUMEN BT56 CLEAR LAMP



IES NEMA TYPE	7 H x 7 V
MAXIMUM CANDELA	3391.4
MAXIMUM CANDELA ANGLE	22.5 H 13 V
HORIZONTAL BEAM ANGLE (50%)	74.1
VERTICAL BEAM ANGLE (50%)	15.3
HORIZONTAL FIELD ANGLE (10%)	139.0
VERTICAL FIELD ANGLE (10%)	146.3
TOTAL RATED LAMP LUMENS	110000
BEAM LUMENS	30198.00
BEAM EFFICIENCY	27.45%
FIELD LUMENS	67895.02
FIELD EFFICIENCY	61.72%
SPILL LUMENS	1482.16
TOTAL LUMENS	69377.17
TOTAL EFFICIENCY	63.07%