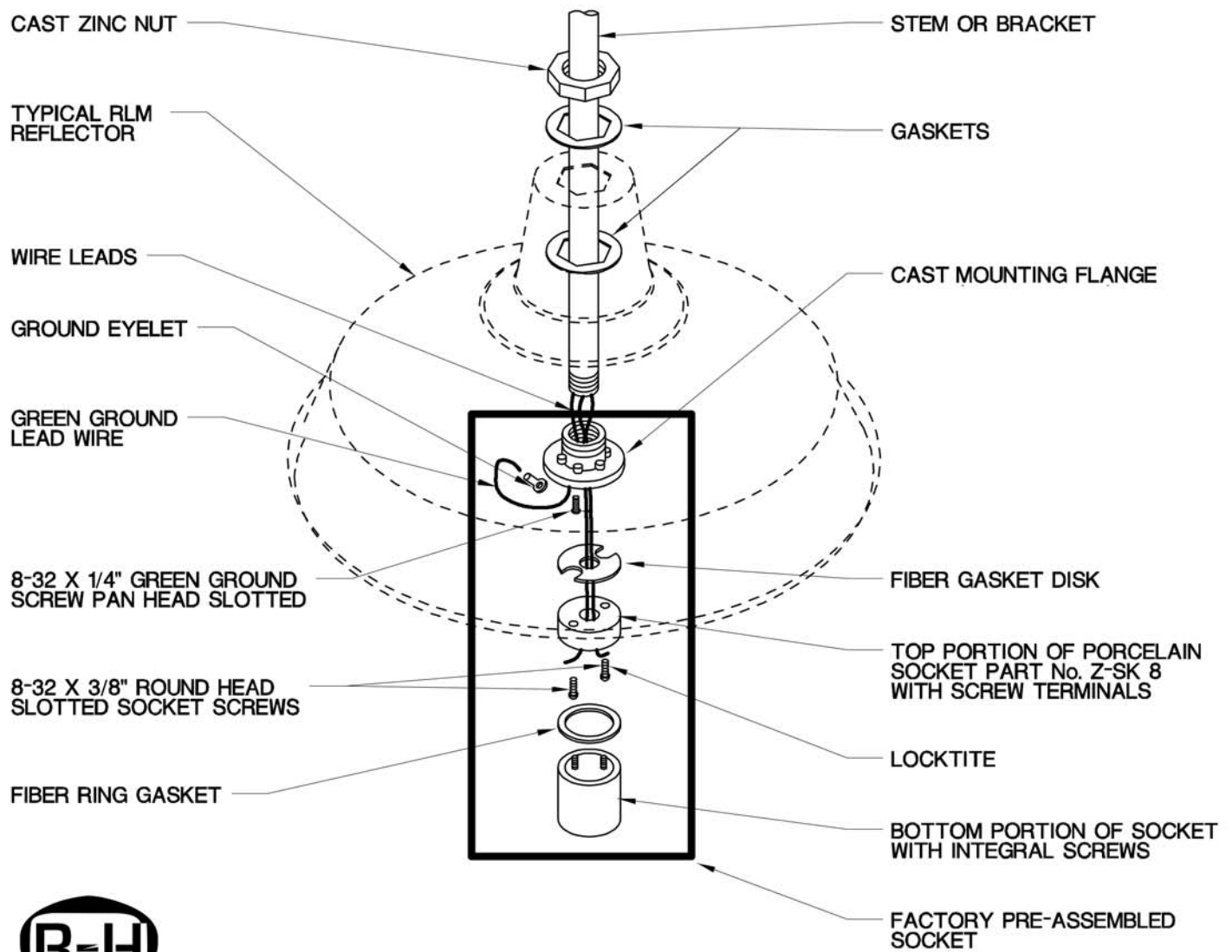
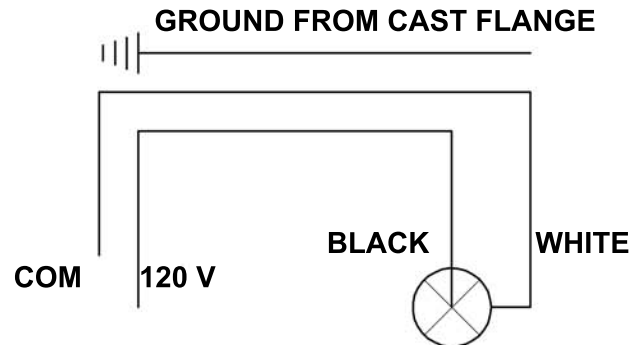


INSTALLATION INSTRUCTIONS FOR STEM HUNG & BRACKET MOUNTED REFLECTORS

!!! IMPORTANT !!! Fixtures must be installed according to the instructions provided to avoid field failure! Make sure all power is disconnected prior to installation. Must be wired according to Local and National Electric Codes by a qualified electrician.

- 1) Install socket assembly into reflector, pull wires carefully through top opening. Refer to drawing for gasket placement.
- 2) Tighten cast nut onto cast mounting flange. Note threads are reversed to prevent loosening during stem or bracket installation.
- 3) Pull wires through stem or bracket.
- 4) Thread 3/4-14NPT stem or bracket to cast flange. Do not twist wires.



© 2009 RH Lighting Solutions - 3155 West 33rd Street, Cleveland, OH 44109
Phone: 877-905-4448(877-90-LIGHT) - Fax: 800-428-3080 - www.rhlightingsolutions.com

ASSY_RLMSTEM.pdf